

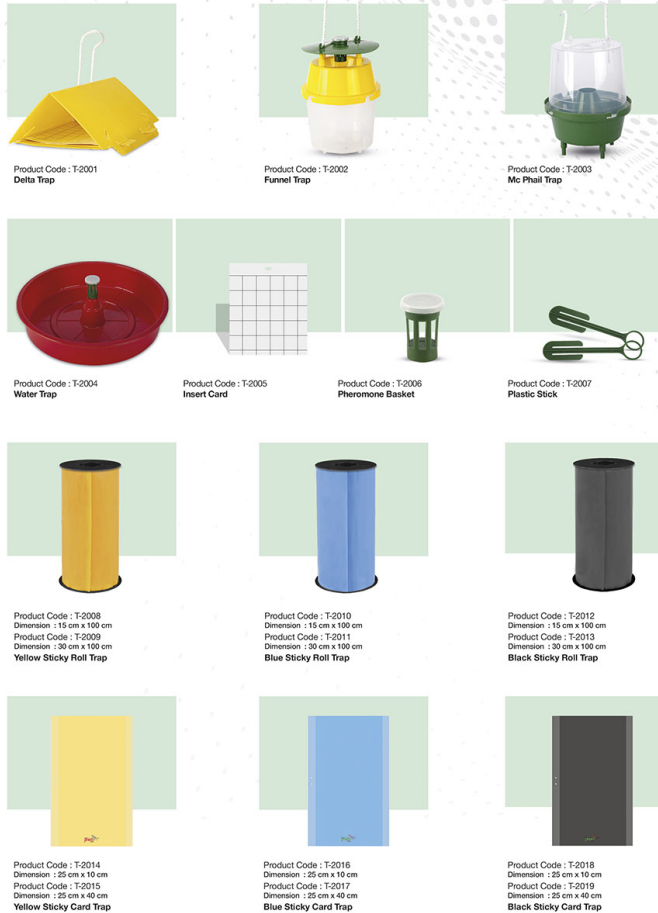
BIOLOGICAL CONTROL AGENTS



PHEROMONES

| Product Code | Product Name | Crops |
|--------------|--|--|
| F-3001 | Biopheropoint TuA® (<i>Tuta absoluta</i>) | Tomato, Potato. |
| F-3002 | Biopheropoint Fro® (<i>Frankliniella occidentalis</i>) | Vegetable species such as sweet peppers and cucumbers; ornamentals such as rose and chrysanthemum; fruits such as strawberries and raspberries |
| F-3003 | <i>Ceratitis capitata</i> (Cc) | Citrus except lemon, pomegranate, peach, apricot, plum, persimmon, apple, pear, fig, grape |
| F-3004 | <i>Cydia pomonella</i> (Cp) | Apple, pear, quince, walnut |
| F-3005 | <i>Lobesia botrana</i> (Lb) | Grape |
| F-3006 | <i>Rhagoletis cerasi</i> (Rc) | Cherry, sour cherry |
| F-3007 | <i>Rhynchophorus ferrugineus</i> (Rf) | Date, palm tree |
| F-3008 | <i>Thaumatococcus ptyocampa</i> (Tp) | Pine |
| F-3009 | <i>Helicoverpa armigera</i> (Ha) | Cotton, tomato, pepper, okra, eggplant, chickpea, bean, corn, tobacco |
| F-3010 | <i>Spodoptera exigua</i> (Se) | Cotton, corn, pepper, sugar beet, peas, alfalfa, peanuts, melon |
| F-3011 | <i>Bactrocera oleae</i> (Bo) | Olive |
| F-3012 | <i>Prays oleae</i> (Po) | Olive |
| F-3013 | <i>Anarsia lineatella</i> (Al) | Peach, nectarine, apricot, plum, almond |
| F-3014 | <i>Drosophila suzukii</i> (Ds) | Cherry, apricot, plum, peach, nectarine, pear, persimmon, kiwi, fig, strawberry, grape, apple, pear |
| F-3015 | <i>Kermania pistaciella</i> (Kp) | Pistachio |
| F-3016 | <i>Ephesia kuehniella</i> (Ek) | Flour and warehoused products |
| F-3017 | <i>Mamestra brassicae</i> (Mb) | Cabbage |
| F-3018 | <i>Tribolium confusum</i> (Tc) | Grain and bakery products |

INSECT TRAPS



bio protect your future
phero
point

PRODUCT CATALOGUE

+90 533 287 02 37 / info@biopheropoint.com.tr

Selçuk Üniversitesi Teknoloji Bölgesi
Konya Teknokent G Blok Akademi Mah.
Gürbül Sokak No:67
Selçuklu/KONYA



Product Code : B-1001

Nesidio-Point *Nesidiocoris tenuis*



Nesidiocoris tenuis, *Nesidiocoris tenuis* is a predatory bug belonging to the Miridae (order Heteroptera) family. Adult and nymphs eat white flies, thrips, red spider mite and Lepidoptera eggs. Adult and nymphs have piercing-sucking mouthparts, this species bites the prey and sucks the content.

Crops

Nesidiocoris tenuis recommended for use on tomato and eggplant (aubergine) crops. In spring-summer the development is most suitable, in autumn it slows down. In winter condition it can be used in heated greenhouses. *Nesidiocoris tenuis* can damage the crops in case of lack or scant of preys. Therefore it is necessary to monitor the predator/prey ratio at regular intervals.

Use

Insects release as soon as possible after planting young plants. One release is generally enough to establish predator *Nesidiocoris tenuis* for the lifespan of the crop. When pest level is high, additional release may be required. Before opening the bottle, set it horizontally and rotate to mix the content. Open the bottle and walk along the plant rows, gently shaking and spread it over the leaves. Release *Nesidiocoris tenuis* as uniformly as possible throughout the crop.



Tomato leaf miner

Whitefly

TARGET PESTS

Nesidiocoris tenuis is used for biological control of whitefly, thrips and tomato leaf miner (*Tuta absoluta*).

Product Code : B-1002

Ori-Point *Orius laevigatus*



Orius laevigatus, is a predatory insect belonging to the Anthrocoridae family. This predator eats thrips. When thrips is absent, *Orius laevigatus* can also feed on aphids, red spider mite, whitefly, Lepidoptera eggs (cotton bollworm, tomato leaf miner etc.). *Orius laevigatus* can feed on pollen so establishes well on pollen-rich crops. Adult and nymphs have piercing-sucking mouthparts, this species bites the prey and sucks the content. *Orius laevigatus* can eat about 20 thrips per day.

Crops

It is used in sweet pepper, strawberry, watermelon, melon, eggplant (aubergine) and some ornamental crops. It cannot be used in tomato crops.

Use

Before opening the bottle, set it horizontally and rotate it to mix the content. Sprinkle the predatory bugs on the leaf. If release boxes will be used to release the predator to the crop, these boxes are hung on at the middle height of the plant. These boxes do not receive direct sunlight. It is recommended to release predator into crops either early in the morning or early evening. A multiple release with a total number per square meter is recommended.



Thrips

Thrips

TARGET PESTS

Orius laevigatus is used for biological control of thrips.

Product Code : B-1003

Aphid-Point *Aphidius colemani*



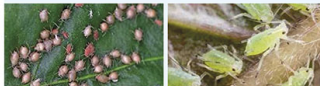
Aphidius colemani is a parasitoid insect belonging to the Braconidae family. *Aphidius colemani* can parasitize aphid species including the green peach aphid (*Myzus persicae*) and the cotton aphid (*Aphis gossypii*). The wasp parasitizes the aphids in the crop. The female wasp lays an egg within the aphid and parasitized aphid became a brown "mummy" when the parasitoid larva develops feeding from its internal parts. *Aphidius* female can parasitize over 300 aphids in her lifetime.

Crops

It can be used in protected crops pepper, eggplant, cucumber etc. and also open field crops fruit and ornamentals.

Use

Before opening the bottle, set it horizontally and rotate it to mix the content. Sprinkle the parasitoid on the leaf or in release boxes. These boxes are hung on the plant. When aphids are first noticed in a crop *Aphidius* should be released. It is recommended to release parasitoid into crops either early in the morning or early evening.



Mummy aphid

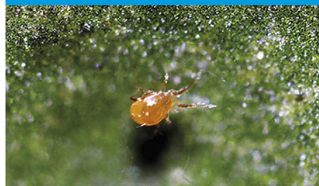
Aphid

TARGET PESTS

Orius laevigatus is used for biological control of aphids.

Product Code : B-1004

Persi-Point *Phytoseiulus persimilis*



Phytoseiulus persimilis is a predatory mite belonging to the Phytoseiidae family. It is a predatory mite of red spider mite (*Tetranychus urticae*). This predator mite eats all the stages of the red spider mite, although it prefers young spiders. The predatory mites pierce the prey and consume the contents.

Crops

Use in any vegetables, ornamentals or fruit crop infested by red spider mites.

Use

Before opening the bottle, set it horizontally and rotate it to mix the content. Sprinkle the predator mite on the leaf. The optimal conditions for predator mite establishment are 20°C, and a relative humidity 70%.



Red spider damage

Red spider mite

TARGET PESTS

Phytoseiulus persimilis is used for biological control of red spider mite (*Tetranychus urticae*).

Product Code : B-1005

Tricho-Point *Trichogramma evanescens*



Trichogramma evanescens is used for biological control of tomato leaf miner (*Tuta absoluta*), european corn borer, european grapevine moth, codling moth. This parasitic wasp is an endoparasite that develops inside of host eggs.

Crops

Tomato, corn, vineyard, fruit trees.

Use

Hang the sachets on the plant and protected from direct sunlight. It is recommended to release parasitoid into crops either early in the morning or early evening. Release the product uniformly in crops.



European grapevine moth

Codling moth damage

TARGET PESTS

Tomato leaf miner (*Tuta absoluta*), european corn borer, european grapevine moth, codling moth.

Product Code : D-4001

Insect Food *Ephestia kuehniella* eggs



Ephestia kuehniella provides a food source for the rearing of beneficial insects. Also, when pest levels are initially low it is suggested to first apply frozen moth eggs over the crop to give predatory insect a food source and improve initial establishment.

Crops

Varied greenhouse crops and ornamentals.

Use

Frozen eggs apply directly to leaf surface. It is recommended that the plants wetted with water before application in order to moth eggs to stick to the leaves.

Product Code : D-4002

Insect Food *Ephestia kuehniella* eggs + *Artemia spp.*

It is used as an additional food source to increase the population in products where natural enemies are released.

Crops

Varied greenhouse crops, ornamentals.

Use

Frozen eggs apply directly to leaf surface. It is recommended that the plants wetted with water before application in order to moth eggs to stick to the leaves.